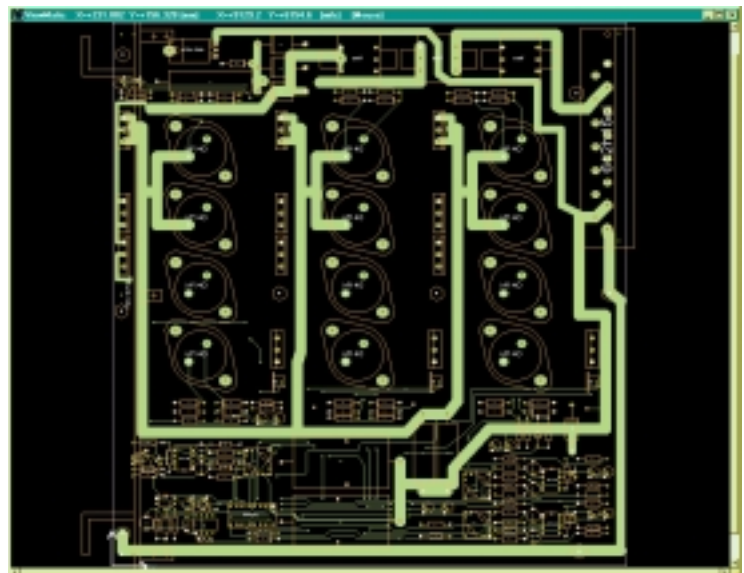




The XMatic solution provides the industries' most flexible software tools for generating the data required, to run production for the entire shop floor level equipment.

- ▶ Large number of CAD filters continuously increasing
- ▶ Capability to rebuild any missing or erroneous CAD data.
- ▶ Highly versatile database concept to add, modify imported data
- ▶ Large number of tester filters, including, ICT, MDA, Flying Prober, Laser, Vision (AOI) and X-Ray (AXI).
- ▶ Large number of assembly outputs with full line optimisation based on kinematics computing.



# innovative novation power...

## ▶ Flexible data preparation

The XMatic software is a modular tool to provide the maximum flexibility to generate equipment data. The Concept is based on the fact that the data extracted from the CAD is invariably incorrent, incomplete or missing. The extent of available tools is essential in order to be able to respond at any situation.

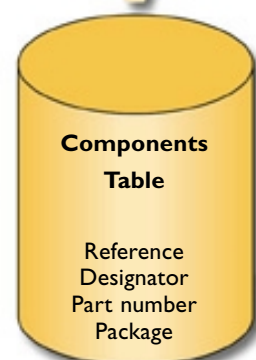
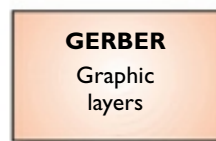
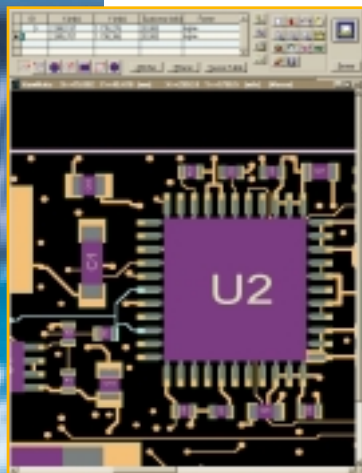
## ▶ CAD rebuilding

Normally the user must be able to start the production with whatever information format exists. Sometimes it is in Gerber, some is on paper or in pdf format, and some must be added. The FlexMatic CAD rebuilder comprises all the user-friendly interface tools required to execute this demanding task. It is our concept that the more data you have, the easier the rebuilding will be.

## ▶ Do it once only

Xmatic requires no entry duplication and provides full guidance.

The database complementary with a library file responds to the demand. The user makes the modification for one board and the saved information can be used for the next board automatically.



FlexMatic

RepairMatic

# Reliability

## ...reliability in new dimensions...

### ▶ 3D probing with TestMatic

XMatic software handles all types of test, including the probe placement for the traditional bed of nails fixtures. A new feature of XMatic is the 3D concept to place a probe and to check the height of the component, the legs and the probing point.

### ▶ Graphic editor

This feature is particularly helpful to modify existing graphics. The Drawing tool palette allows the creation of the basic shape. Also it is possible to save the combined or single layer in an external graphic format.

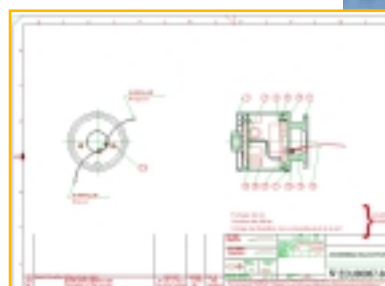
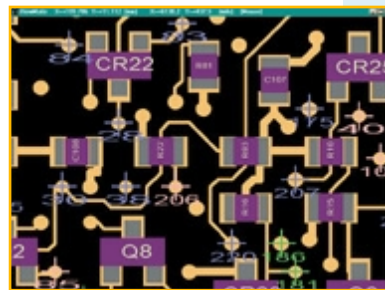
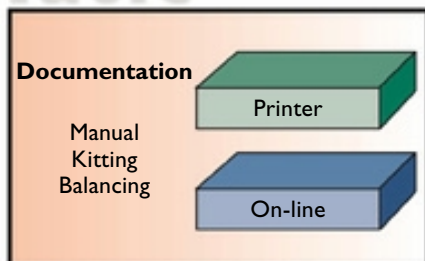
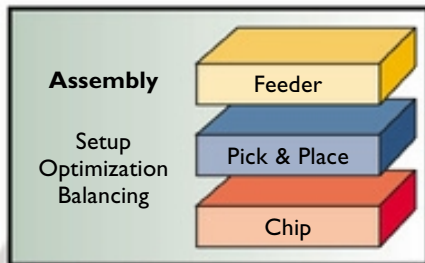
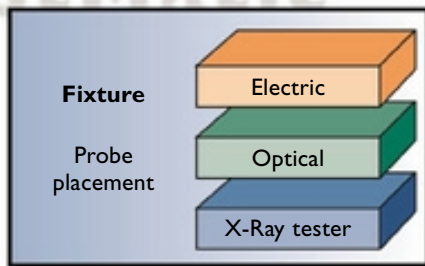
### ▶ Line Optimization

The XMatic software an industry leader in providing full line balancing based on the speed, acceleration, nozzle change, feeder placement (handle asymmetric feeder dimension) and movement for each type of machine. The automatic process can also be modified by introducing some manual change.

### ▶ Documentation

The production book recreates the flow of your process by documenting each phase.

The book is divided into chapters (a chapter is a production phase) and into pages. Each page may contain text or tables or drawings. The automatic coloring feature is particularly useful to create kitting data.



# ...experience undreamed of potential...

## ► Technical specifications

KERNEL	
Relational Database in XBase format	No size limit
Gerber import, export and display	Import Gerber 274-d, Gerber 274-X Excellon
ASCII Parser	Extract data from any file to be saved in the table
Graphical layers	Maximum 256 with a palette of 64 colors on 32M
Multicolor layer	For some application
Mechanical drawing import	
Graphic editor for package drawing	Possible to import from mechanical CAD
Board panelisation	Direct for single manual for multiple board
Data login	Each action is saved
Auto Class assignment	Base on Reference Designator initial
Graphic resolution	Hardware limit only
Graphic tools	Polyline, straight line, rectangle, circle, ellipse, pad
Board tool	Rotation, mirroring, origin, zoom
Entity selection	By lasso and magnetic snap

COMPONENT	
Part number	Store the CAD and the production P/N
Package name	Store the CAD, the production Package and the alias
Part number fields	Class, type, name, value, tol, description, package, command,
Core package field	XY and Z dimension, weight, glue point

CAD FILTER	
Direct CAD link	22 filters Mentor, Cadence, PADS, PCAD, Visula, Zuken, E-Cad, Topcad, Orcad, Protel, Accel, Cades, Castar, DaI-X, GenCad, Veribest, Vutrax, IPC, Pantheon
Flexmatic	Cad rebuilding package

OUTPUT FILTER	
Test Module	Fixture generation including mechanical data
Tester Filter	Vision Scorpion, Flying Scorpion, HP 5DX, HP3070, Genrad 227x and 228x, Schlumberger, Seica, Takaya, Teradyne L200-L300, Z1800, Marconi, Nagoya, Tescon
Place Module	Machine splitting, optimization and line balancing,
Machine Filter	KME, FUJI, PANASONIC, SANYO, UNIVERSAL, EUROPLACER

RECOMMENDED HARDWARE	
CPU	400 MHZ RAM 128 MB
Hard disk	10 GB
Video	800x600 min
Monitor	Color 17" min
Operating System	Windows, 95,98,Millenium, NT and 2000

Data subject to alteration without notice.

XM 001



SCORPION TECHNOLOGIES AG  
 PAPERREYE 51 • D-22453 HAMBURG  
 TEL: +49 (0)40-55 787-0  
 FAX: +49 (0)40-55 787-555  
 E-MAIL: SCORPION@SCORPION-TECH.COM